

COVER: LUCA INDRACCOLO

WORKSHOP HANDBOOK 2024

RAW UMBER

s t u d i o s



ABOUT RAW UMBER

16 NELSON STREET, STROUD, GL5 2HN

Pictured: front of studio



WHO ARE WE?

Raw Umber Studios is a non-profit art studio based in Stroud, that focusses on representational drawing and painting workshops.

In-studio, we host a variety of workshops (figure, portrait, still life) by established artists from around the globe.

We also teach regular online portrait and figure drawing classes.

THE TEAM

Neil Davidson, Founder
neil@rawumberstudios.com

Lizet Dingemans, Head of Art
lizet@rawumberstudios.com

Georgia Orrell, Studio Manager
georgia@rawumberstudios.com

Varosha Lamb, Workshop Host
rosha@hotmail.co.uk

CONTACT NUMBERS

If you need to get hold of us more urgently, please text or call us:

Neil: **07984 953200**

Lizet: **07939 825360**

Georgia: **07519 097045**

Varosha: **07971 889767**



WORKSHOP INFO

GENERAL INFORMATION ABOUT OUR WORKSHOPS

Below: Anastasia Pollard workshop



Our workshop outlines will entirely depend on the tutor.

MATERIALS

Our material lists vary depending on the workshop.

More info can be found on the [workshop pages of our website](#).

Do email us if you have any questions prior to the course.

TIMES

Courses are 10am - 5pm. An hour-long break starting at 1pm. We don't provide a meal, but we have plenty of suggestions of places to go!

BREAKS

We'll have regular short breaks and the occasional long break. Feel free to take additional time out if needed!



Above: Teresa Oaxaca workshop

We're all about learning in a relaxed, informal environment. However there are **a few rules** to keep everyone happy and safe:



No photographs of models



Note that turpentine is not permitted in the studio.



Your tutor will direct the model. Don't touch or ask the models to move.

WHERE ARE WE?

16 NELSON STREET, STROUD, GL5 2HN



THE STUDIO

GENERAL INFORMATION ABOUT OUR BUILDING

Pictured: main studio room



MAIN STUDIO ROOM

A bright, airy space with room for two groups to paint different models. Options of chairs/stools to perch if you'd prefer.

STILL LIFE ROOM

Full of our still life subjects, casts and ongoing painting set-ups for our regular students.

TEA ROOM

Always stocked with tea, coffee and painting fuel (biscuits).

BREAK AREAS

If you don't fancy venturing out for lunch, we have sofas and comfortable chairs. We also have a garden with picnic benches, a wonderful view and the occasional friendly cat.



ACCESSIBILITY

Our main studio is based on one floor, with an accessible toilet available. Wheelchair friendly.

PARKING

We have our own car park that you're welcome to use.



WHERE TO EAT

While we don't offer lunch, we can recommend heaps of places within easy walking distance of your easel...



SIMPLE (HRISTO'S KITCHEN)

At the bottom of our road. Brunch café that serves simple, 100 % natural food – including vegan and gluten Free options – accompanied by authentic espresso coffee.
Nelson St, GL5 2HL

WOODRUFF'S ORGANIC CAFÉ

Homemade lunches and cakes! Plenty of vegan and vegetarian choices available.
24 High Street, GL5 1AJ



COSTA

Not in the mood to try something new? Just follow the road down into the high street and you'll find it on your right.
52/53 High St, GL5 1AP.

GALGOS LATINO

A latin american experience in Stroud. Drawing inspiration from traditional Latin American dishes with a twist! Recommend for dinner.
The Greyhound, GL5 1QG



THE CORNER HOUSE

If you fancy more of a 'dish' than a sandwich, The Corner House is, funnily enough, just around the corner.
6 Union Street, GL5 2HE

LITTLE GINGER DELI CAFÉ

Friendly deli and café stocking local produce. With epic deli sandwiches, jacket potatoes, salads and toasties to go!
1 Kendrick St, GL5 1AQ



THE RETREAT

With a variety of interesting and imaginative lunchtime choices, The Retreat is perfect for those after a relaxed atmosphere and talking point on your return to class!
28 Church St, GL5 1JL

FIVE VALLEYS FOOD HALL

Discover tastes from around the globe! This indoor market is located in the main shopping centre and holds an exciting mix of street food, groceries and fresh produce.
King Street, GL5 1RR



STROUD FARMERS' MARKET

Every Saturday between 9am - 2pm, experience the famous Stroud Farmers' Market in Cornhill Market Place and the surrounding streets in Stroud. Food galore!

THE MILLS CAFÉ

An independent coffee shop located in a cobbled courtyard off the high street. Pretty courtyard, cosy café.
55 High St, GL5 1AS



WHERE TO STAY

This is just a small selection of student recommended accommodation. If you've stayed anywhere not on this list and want to share, please do!

Check [airbnb.co.uk](https://www.airbnb.co.uk) for more.



when visiting
RAW UMBER STUDIOS

MARIE & MELVYN'S

Our neighbours Marie and Melvyn run a B&B just a few doors down.

Book quickly: this is a first choice for many of our regular students!

Email:
melvyn@melvyn-warren-smith.com

JOANNA'S

Comfortable single room with shared bathroom in quiet home, 2 minutes walk from the studio. Wifi. Parking available or can collect you from the train station. Use of kitchen or nearby cafes for breakfast.

079678 57296

ONE CASTLE GARDENS

Our studio is just 5 minutes away from this one! Top tip: mention us for a special rate.

Chris 07956 753706

VICTORIA'S GUEST HOUSE

This cosy, self-contained annex is only a short walk from the centre of Stroud. Enjoy your patio area, with outdoor table and chairs to enjoy a morning coffee or an evening glass of wine!

link: [airbnb.co.uk](https://www.airbnb.co.uk)

THE STROUD HOTEL

Conveniently located in the heart of the Cotswolds, ideal for both short and long stays.

[thestroudhotel.com](https://www.thestroudhotel.com)



STROUD HOTEL
STATION ROAD, GL5 3AP

A LITTLE FURTHER OUT...

PREMIERE INN

If you're after something straightforward with no fuss, you can't go wrong with the Premier Inn. Just a 12 minute walk from the studio.

premierinn.com



PREMIER INN
STRATFORD LODGE, GL5 4AF



AMBERLEY INN,
CULVER HILL, GL5 5AF

THE AMBERLEY INN

A fine example of a traditional Country Inn situated in the heart of the Cotswolds. The Amberley Inn sits proudly overlooking the famous Woodchester Valley in an area of outstanding natural beauty. Car needed.

theamberleyinn.co.uk

THE OLD LODGE

Set in the heart of Minchinhampton Common, this hotel and restaurant has unrivalled views of the Cotswolds. The Old Lodge is the perfect place to take it easy, with locally sourced food & drink.

food-club.com/pubs/the-old-lodge



THE OLD LODGE
MINCHINHAMPTON, GL6 9AQ



BURLEIGH COURT HOTEL
GL5 2PF

FANCY A TREAT?

BURLEIGH COURT HOTEL

Burleigh Court Cotswolds is a boutique manor house hotel and is full of captivating country charm with a splash of luxury. Car needed.

burleighcourtcotswolds.co.uk

RAILWAY HOTEL APARTMENTS

Comprises of eight luxurious apartments and cottages, set within its own quiet grounds adjacent the Nailsworth stream, yet ideally positioned in the centre of Nailsworth. All properties have been finished to an exacting standard, with a very high specification and furnished in a contemporary style, giving them serious wow factor. Car needed.

railwayapartments.co.uk



RAILWAY HOTEL APARTMENTS
GL6 OAN



WILD GARLIC ROOMS
GL6 ODB

WILD GARLIC

"Each of our rooms have been designed to be comfortable, peaceful and the perfect end to the day. We hope you fall into a deep comfy sleep, and enjoy your time in this part of The Cotswolds as much as we love it here."

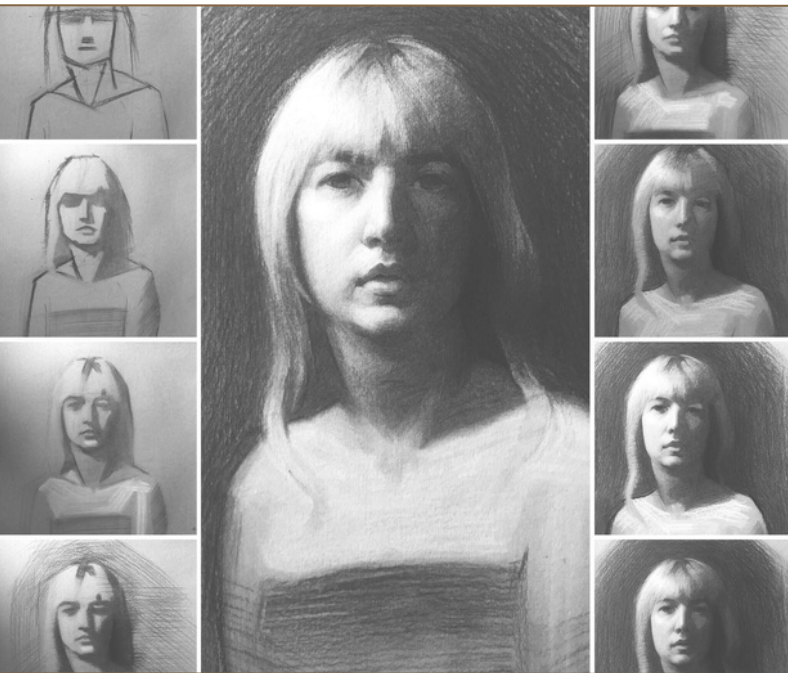
Car needed.

wild-garlic.co.uk

ONLINE CLASSES

NEED YOUR FIX BETWEEN WORKSHOPS? JOIN US ONLINE!

Pictured: website screenshots



OUR CLASSES

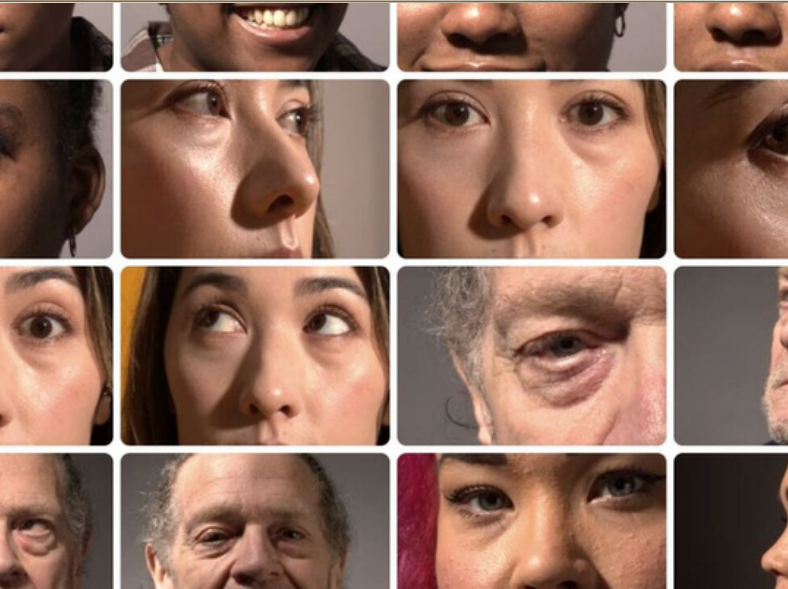
Figure drawing every Wednesday at 8pm, and portrait drawing every Sunday at 4pm. **Our last portrait drawing class of every month is completely FREE!**

TUTORS

Our online tutors include:
Lizet Dingemans, Lydia Cecil, Patrick Jackson, Edith Dormandy, Luca Indraccolo, Charlie Pickard and more...

THAT'S NOT ALL...

Browse our vast photographic **reference drawing library**, choose your own pose with our **3D model collection** and enjoy **special exclusive art classes** from expert guest tutors such as David Shevino, Magdalena Kusowska and Craig Stephens!



SUBSCRIBE

We offer two levels of subscription – a Raw Umber Gold subscription and a Raw Umber Standard subscription.

<https://rawumberstudios.com/raw-umber-subscription/> for more info